



## Newsletter 12 2020-21

Friday 13<sup>th</sup> November 2020

Dear Parents and JIS community

We have 2 important items to share this week – please read both of these carefully, especially the details regarding the return to whole day schooling in Monday 16<sup>th</sup> November.

**We are delighted and very proud to announce that this week we have received an outstanding evaluation report from the I.B. for our 2020 school evaluation visit.**

The report is a very strong observation of the work that all members of the JIS community put into making our school work the way it does. It is a true vindication of what we believe education should be and how we try every day to make it the best we can for all the students. Thank you to all the staff and members of the school community who spent many hours researching our self-study and then meeting with the Evaluation staff assigned to us by the I.B. Asia Pacific office.



In the words of our IB World School Manager, Angela Meikle she shared the following with the school:

*“I would like to congratulate you on the strong programme implementation that was evident in your self study.”*

*“We would like to share the effective practices found in your school internally and more broadly across the IB (Asia region and beyond), if you are open to this collaboration.”*

Within the report itself, the school received 18 different commendations (6 more than in 2015!), across all the different standards and expectations, as well as no matters to be addressed. This is an extremely positive reflection on the school. The IB World Schools manager highlighted areas of particular note:

- *The school community demonstrates a deep understanding of and a commitment to the Primary Years Programme and this is evident in conversations with members of the community inclusive of the pedagogical leadership team, teachers and members of the school board.*
- *Action is nurtured and modelled throughout the school community and beyond and the action in which the school engages is based on the needs of the school and the local community.*
- *Teachers have incorporated differentiation for students' learning needs and styles into collaborative planning and reflection.*

Other commendations to note are:

- *The school provides extensive support for: a diversity of mother tongues; students who are not proficient in the language of instruction.*
- *The school has developed a process that ensures balance and articulation between the transdisciplinary programme of inquiry and all additional single-subject teaching.*
- *The written curriculum outlines in the programme of inquiry, related to concepts that are exceptionally significant, relevant, engaging and challenging.*
- *The school ensures that all teachers have an understanding of their responsibility in supporting all students' personal and social education.*

- *The school demonstrates many ways in which they build on what the students know and can do in order to refine learning engagements*
- *Students are aware of their development according to the IB learner profile attributes*
- *The school uses a range of strategies and tools to assess student learning and these are evident through student work samples and planners*

All of this is something that we as a school community are extremely proud of as it acknowledges the hard work, commitment and progress of the school since our last evaluation. The self-study and evaluation is a rigorous process. It includes a full one year of 'self-study', which is submitted along with all relevant school documentation to the IB. The evaluation visit itself, although it was virtual this year, is extremely thorough with many, many meetings and collaborations. Classes were observed, resources were examined, and members of our community, including students were interviewed. Documents, videos, photographs were all submitted in advance, followed up by a 3 day schedule of live filming of classes and meetings.

It is important to say a huge thank you for the passion, time and creativity that all our staff members bring to the school. It is great for it to be acknowledged publicly and to note that exciting times, collaborating with the IB lay ahead! We look forward to creating opportunities for all our students in the next 5 years, before we are evaluated once more.

If you would like to read a full copy of the report, please email Ms. Wan at [cwan@es.jis.edu.hk](mailto:cwan@es.jis.edu.hk) and she will send you a copy.

### Whole day schooling – starting Monday 16<sup>th</sup> November at 8:15a.m.

We are all set to welcome all the students back on Monday. We have considered all the logistics and made plans for classrooms and also the lunch procedures to make sure we are as safe as possible and in compliance with the guidelines requested of us by HK authorities. We have all staff working at school tomorrow (Sat 14<sup>th</sup>) to finalise all the details and sort our classroom layouts.

Starting on Monday we shall be running a normal school day and full timetable from 8:15 a.m. until 2:45 p.m.



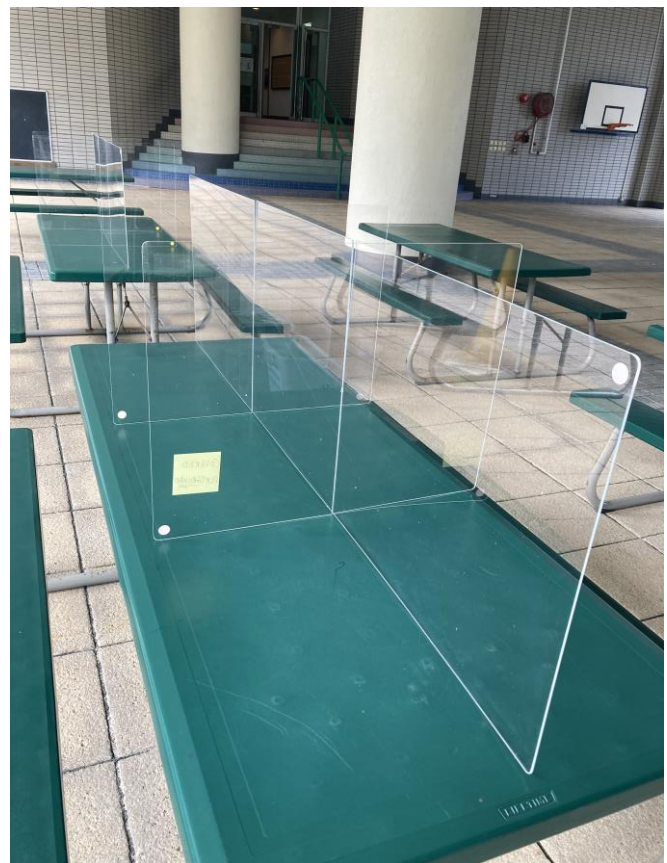
#### Arrival and pick up from school:

- **All buses** will drop off and collect from the rear car park – next to the playground. No cars will be allowed in this area. The buses will need access to this area, so please do not block it when parking a car.
- All students who arrive by school bus will have their temperature scanned before they enter the building or playground areas. The students have all been shown how to do this.
- **All students who are dropped off** by car or arrive with helpers or parents on public transport will enter and leave the school from the **FRONT** door. This will need to be done carefully as in the mornings there will be Japanese Section buses as well as cars in the front carpark – please just drop off without getting out of your car to keep the flow of traffic as smooth as possible.
- At the entrance all students will follow the usual routine of hand sanitising and having their temperature checked before entering school
- At pick up time all students who do not come to school by bus will exit at the front entrance – please explain this to your helper or family members who are collecting children. Each class will be leaving through the main entrance one by one to make sure that it is safe and smooth.
- We shall need to be as quick and smooth as possible as Japanese Section buses will need to access the car park by 3:10pm. (We have 20 minutes to clear the car park!)

### Eating at school:

Students are not allowed to remove their masks for an extended time in their classroom so all lunches will be eaten in other spaces around school.

- Reception and P4 will use the Art room – with full cleaning and plastic screens to split eating areas, P1, 2 and P5 and P6 will use the Multipurpose Room on the first floor for eating, P3 will use the picnic tables in the playground eating area created by using our large picnic tables
- Lunchbreak will be at the normal times but will be split in half. P4, 5, 6 will go out for recess before they eat (12:00 – 12:25pm) and the Reception class to P3 will eat at this time. Then the P4, 5, 6 classes will come inside to eat their lunch (12:30 – 12:50p.m.) and the Reception, P1, P2 and P3 classes will go out for recess
- Please help us by providing an ‘easy to eat’ lunch for your child – something that they like to eat and that does not involve too many containers. Noodles/fried rice are fine in a small thermos flask, so are sandwiches, rice balls, fruit etc. The students will be assisted but they will need to be as independent as possible
- All eating areas will have to be carefully cleaned before and after eating to comply with EDB regulations
- All students will be required to sit in the same seat each day for lunch (track and trace requirements). Seats will be numbered to help students remember where to go

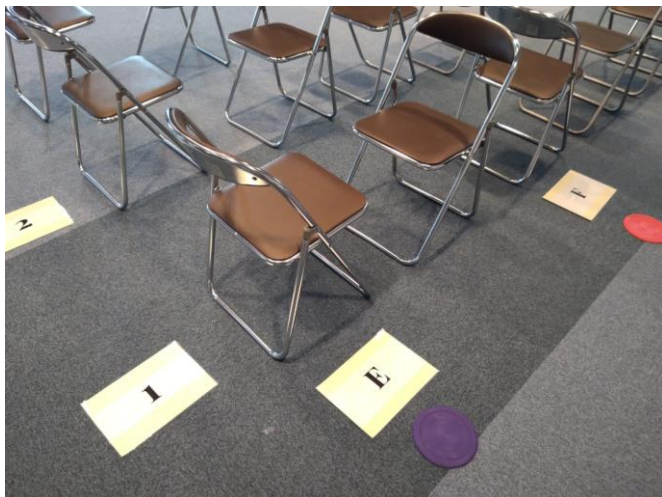


Reception class practice at the Art room tables and the plastic screening ready to be used at the picnic tables

Below we have the chairs layout in the first floor MPR to give students a safe space to eat their lunch and also somewhere to store their lunchboxes.

At each venue the students will have to sit in the same seat each day. Staff will be on duty to assist in any way needed.





The lunch time routines will be fully supported by all staff and we expect to get things running very smoothly after the first few days. We are aware that some of our younger students may take a little longer to eat their lunch and we can make sure that they have enough time to eat.

### **General school life:**

The school day will become a full day and full timetable will be resumed. Language, Music, P.E. lessons will be back to a usual schedule. The whole class will finally get to meet and socialize with each other! All classrooms will have Perspex screens to separate work spaces whilst children are seated at their desks – this will take some getting used to but is a requirement of Hong Kong EDB.

If anyone has any questions, please contact Mr Walton in the school office – [s-walton@jis.edu.hk](mailto:s-walton@jis.edu.hk)

### **Around school:**

#### **Class events: P3 class**

During the current guidelines we are not visiting any indoor areas or museums and we are required to stick to the HK EDB ‘groups of 4 only’ restrictions on any functions out of the school grounds.

This week the P3 class did get out into the Tai Po Kau forest with 3 students and one adult in small groups. Ms Fisher reports that:

*‘P3 had a wonderful time at Tai Po Kau on their first school trip of the year. They enjoyed listening to the sounds of the forest, playing in the open spaces and breathing in the fresh air. They reflected on how being in nature impacted their wellbeing and realised the need to protect it.’*

Although we are restricted as to what we can do we are determined to try to get the students interacting with their environment as much as we can. We have a strong philosophy within the school curriculum of the value of outdoor education and the benefits that it can offer, especially in times of our current pandemic situation.



## Plastic Free Seas – presentation – Tuesday 10<sup>th</sup> November



On Tuesday this week, Fiona Merrill arranged for Mimi from Plastic Free Seas (HK based NGO) to come to school and give a presentation to different groups of students. She had some fascinating and thought provoking information to share which prompted a lot of questions and debate with the students. The statistics on plastics are truly scary – it is time we all did our bit to prevent this.

## Parent Teacher interviews – November 10<sup>th</sup> and 12<sup>th</sup>

Many thanks to everyone who was able to connect with their child's class teacher and some of our specialist teachers this week. The format of online video conference does allow all parents to get involved, either from home or in the office and ensured that we had a very high attendance to these meetings.

My thanks also to the staff for preparing for these meetings and working several days of long hours to make them happen.

## School lunches – provided by 'School Luncher' – on site delivery each day

Some of our long term families have been asking about lunch deliveries and orders through a company we have used before called 'New Luncher'. These orders and deliveries will be able to start in December 2020.

For details about the New Luncher deliveries contact [www.thenewluncher.hk](http://www.thenewluncher.hk)



### **Influenza Vaccinations: students who have booked**

We remind all parents that the flu vaccines that have been booked in advance will be administered to students on Friday 20<sup>th</sup> November – next week.

### **Swimming classes consent forms**

Please complete the short consent form questionnaire sent out by Stephanie Tsui regarding the start of swimming lessons next week. Swimming is excellent exercise and a superb life skill and is an important part of the P.E. programme at JIS. The pool is warm (32C) and students will be managed very carefully in changing rooms and around the pool complex.

Wishing everyone a very enjoyable weekend ahead. We look forward to seeing everyone bright and early at 8:15a.m. on Monday!

Simon Walton  
Principal